



www.idothesr.org

www.connectthemidwest.com



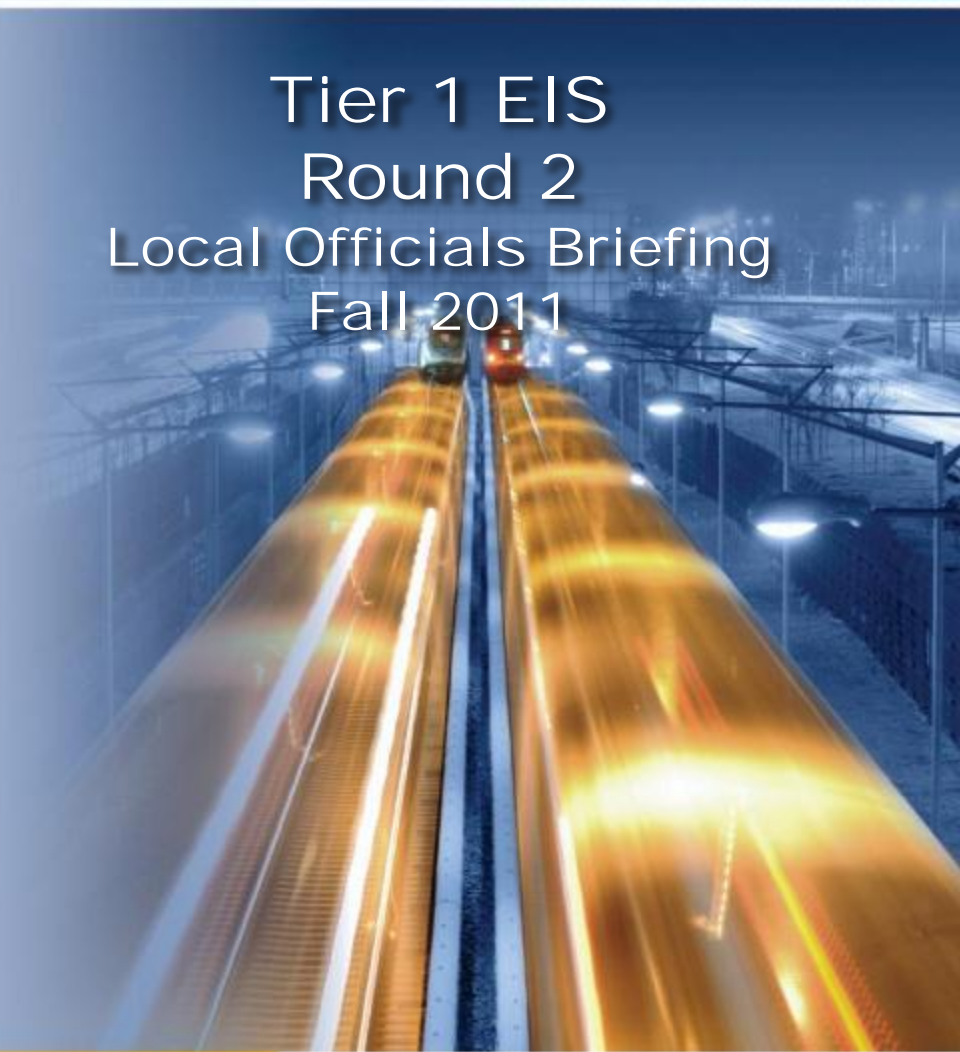
ILLINOIS HIGH-SPEED RAIL

CHICAGO TO ST. LOUIS

Tier 1 EIS
Round 2
Local Officials Briefing
Fall 2011



Illinois Department
of Transportation



Agenda



- » Corridor Level Environmental Review
(TIER 1 Environmental Impact Statement)
- » Next Steps
- » Public Involvement
- » Questions

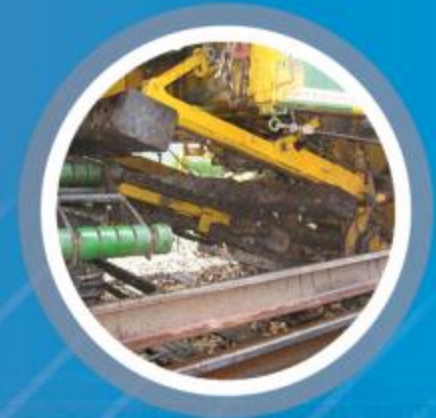


ILLINOIS
HIGH-SPEED RAIL
CHICAGO TO ST. LOUIS

www.idothesr.org

www.connectthemidwest.com

Corridor Level Environmental Review (Tier 1 EIS)



Illinois Department
of Transportation

Who's Involved?



Federal Railroad Administration



Illinois Department of Transportation

Program Management Team
Parsons Brinckerhoff (PB)

Consultant Study Team
Hanson and Parsons
Transportation Group

Other Specialty Subconsultants



ILLINOIS
HIGH-SPEED RAIL
CHICAGO TO ST. LOUIS

Tier 1 EIS Study Purpose & Needs



- » The **Tier 1 EIS** will assess the following elements:
 - Changing the corridor from one track to two tracks
 - Increasing the number of high-speed passenger trains
 - Transportation and environmental impacts
 - Safety
 - Performance



What is a Tiered Study?



Corridor Level Environmental Review

Tier 1:

Examples:

- * Cities and stations served
- * Route alternatives
- * Service levels
- * Ridership projections
- * Infrastructure components
- * Environmental impacts

Site Specific Environmental Review

Tier 2:

Examples:

- * Threatened & endangered species
- * Historic & archaeological resources
- * Noise and vibration
- * Air & water quality
- * Wetlands

Alternatives



Chicago to Joliet
16 potential alternatives
and no-build

Joliet to Alton
Excluding Springfield area
Build and no-build

Springfield Area
11 potential alternatives
and no-build

Alton to St. Louis
5 potential alternatives
and no-build



Alternatives Screening Criteria



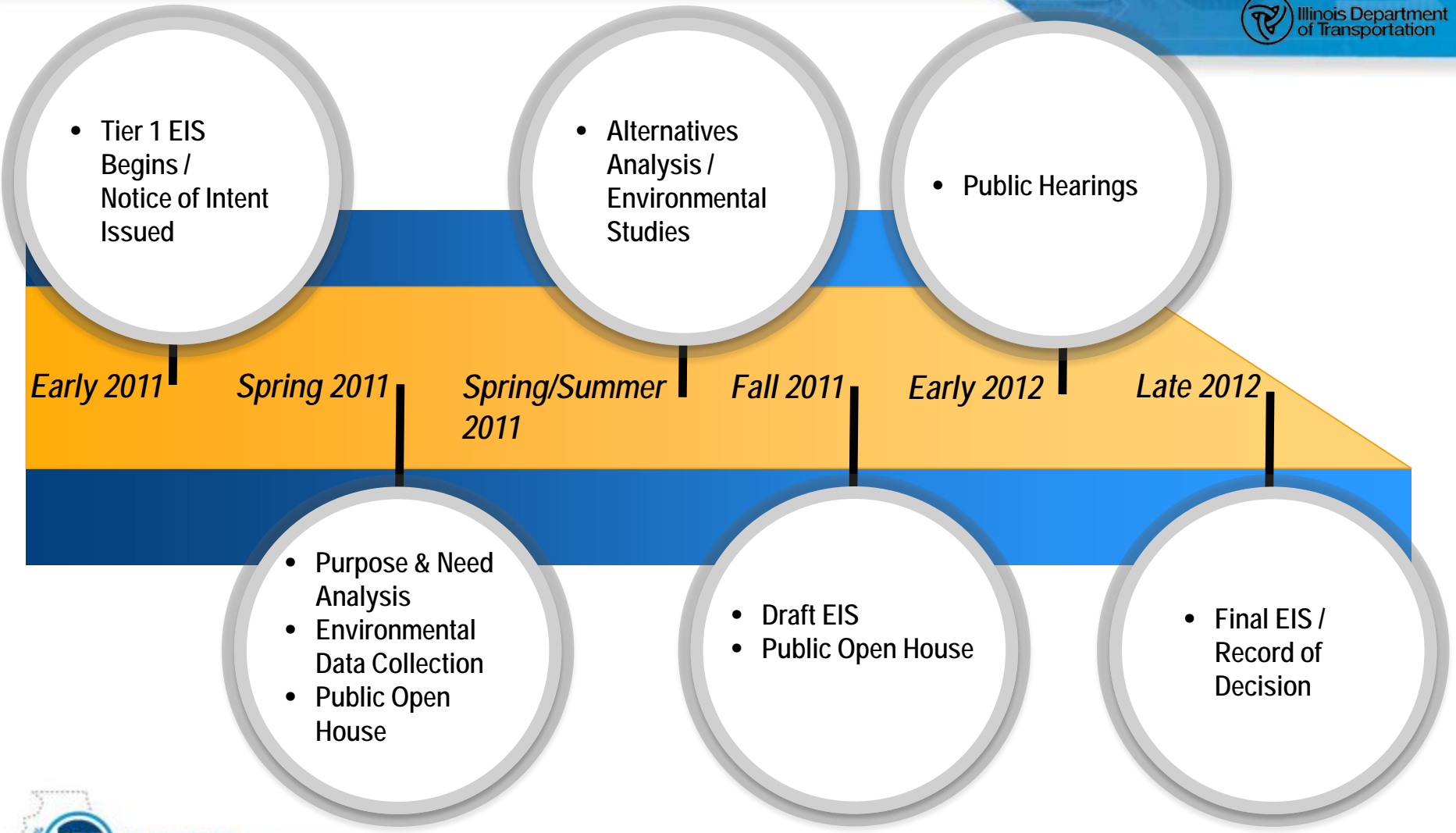
» Maximize:

- Ridership/revenue
- Avoidance of potential hazardous materials

» Minimize:

- Operating and capital costs
- Impacts to existing and planned development
- Impacts to natural resources
- Impacts to social and economic resources
- Impacts to cultural resources

Key Milestones





**ILLINOIS
HIGH-SPEED RAIL**
CHICAGO TO ST. LOUIS

www.idothesr.org

www.connectthemidwest.com

Next Steps



Illinois Department
of Transportation

Next Steps





**ILLINOIS
HIGH-SPEED RAIL**
CHICAGO TO ST. LOUIS

www.idothesr.org

www.connectthemidwest.com

Public Involvement



Public Involvement Opportunities



Stakeholder Outreach

Public Meetings & Hearings

Stakeholder Meetings/Briefings

Small Group Meetings

Media Outreach

Fact Sheets

Project Website:
www.idothsr.org

Project Hotline: 1-855-IDOT-HSR

Coming Soon... *Higher Speeds*



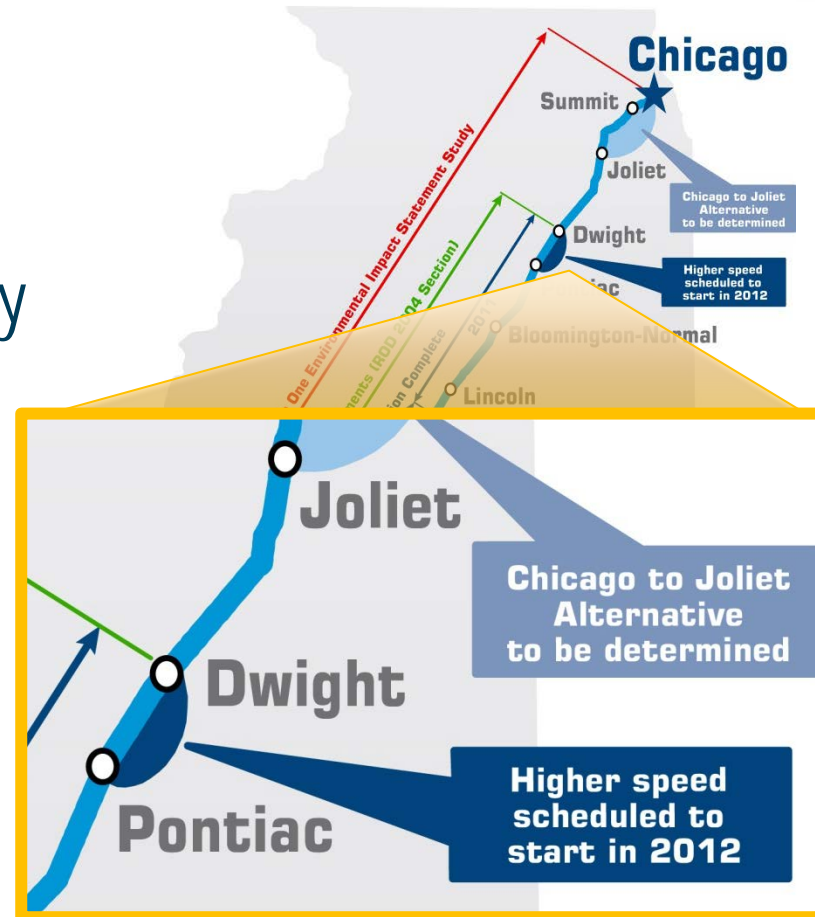
- » **Six new high speed train sets** with state of the art coach/business class seating and premium amenities
- » Upgrades to track and new equipment will **raise on-time performance to 85%**
- » **Improved safety** with enhanced grade crossing warnings and signals, and new premium rail and concrete ties



Pontiac to Dwight



- » Initial segment for higher speed trains
- » Public outreach program
 - What to expect in your community
 - Educational efforts
 - Safety improvements
 - Railroad crossings
 - Grade crossing warnings
 - Enhanced signals
 - Premium rail and concrete ties



Coming Soon... *Higher Speeds*



» Benefits of higher speed trains

- Improved safety
- Economic & community benefits
- New train sets
- Environmental benefits
- Service reliability and time savings



Get Your Information from the Source



» For additional information:

- Visit www.idothsr.org for more project specific information, business opportunities, and to comment on the Illinois High-Speed Rail project
 -  Visit us at <http://www.facebook.com/illinoishighspeedrail>

- Visit www.connectthemidwest.com for Midwest High-Speed Rail information.
 -  Visit us at <http://www.facebook.com/MidwestHighSpeedRail>
 -  Visit us at <http://twitter.com/MWHighSpeedRail>

- Project Hotline **1-855-IDOT-HSR (436-8477)**.



Business Opportunities/Doing Business



For Business Opportunities:

- » Visit the **Doing Business** section of www.idothsr.org.
- » Find details about the bidding process and current business opportunities
- » Find related links for detailed procedures

The screenshot shows the 'Doing Business' section of the Illinois High-Speed Rail website. At the top, there is a navigation menu with 'Doing Business' highlighted. Below the menu, there is a 'Bidding Process' link with a right-pointing arrow. Underneath, there are links for 'HSR Current Business Opportunities', 'Illinois Department of Transportation', and 'Illinois Pacific'. A 'See More...' section includes 'photos' and 'videos' buttons. The main content area features a photo of train tracks and a section titled 'Bidding Process' with the following text:

Thank you for your interest in business opportunities with the Illinois Department of Transportation (IDOT) and the Union Pacific Railroad (UPRR). The bidding process for both organizations will require prequalification. Please follow the guidelines outlined for IDOT and UPRR. Please note the UPRR will require contractors to be prequalified for each High-Speed Rail opportunity.

Additionally, minority-owned and women-owned companies are required to receive certification through IDOT for the Disadvantaged Business Enterprises (DBE) program. The Illinois Department of Transportation fosters equal opportunity for minority-owned, women-owned and other DBEs in IDOT's federal and state-funded contracts.



**ILLINOIS
HIGH-SPEED RAIL**
CHICAGO TO ST. LOUIS

www.idothesr.org

www.connectthemidwest.com

Questions?



Illinois Department
of Transportation

Get Your Information from the Source



» For additional information:

- Visit www.idothsr.org for more project specific information, business opportunities, and to comment on the Illinois High-Speed Rail project
 -  Visit us at <http://www.facebook.com/illinoishighspeedrail>

- Visit www.connectthemidwest.com for Midwest High-Speed Rail information.
 -  Visit us at <http://www.facebook.com/MidwestHighSpeedRail>
 -  Visit us at <http://twitter.com/MWHighSpeedRail>

- Project Hotline **1-855-IDOT-HSR (436-8477)**.